

**[ WE ARE  
SURVIVORS. ]**

# ISVA

**INDEPENDENT SEXUAL  
VIOLENCE ADVISORS**



**NO** male survivor left behind



# ISVA AT WE ARE SURVIVORS.

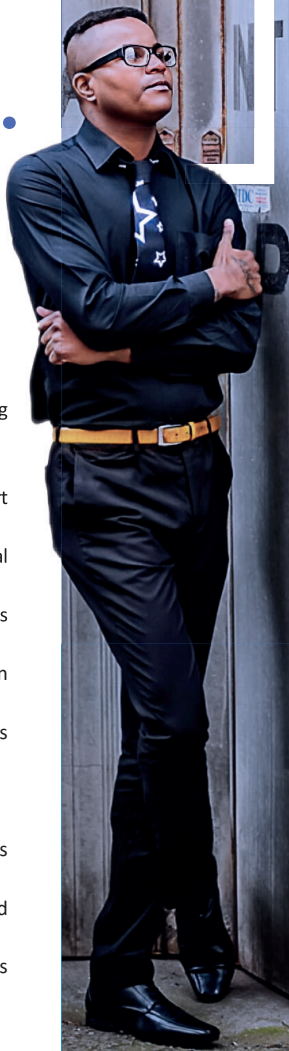
The Independent Sexual Violence Advisor (ISVA) service at We Are Survivors offers information, practical and emotional support for men, boys, trans and non-binary people affected by sexual violence experienced in the past or present. The aim of the service is to help you cope with the aftermath of sexual violence, including information about reporting and support throughout the criminal justice process if you choose to report.

Considering reporting to the police can be a time of great stress and uncertainty. The reporting process and court proceedings can be overwhelming and hard to understand. Our ISVAs are specially trained to offer assistance throughout the criminal justice system – from report to court and beyond.

The service is **confidential, impartial and independent of the police and CPS**. You do not have to report to the police. However, your ISVA can explain what happens when you make a police report and how the criminal justice process works. The role of the ISVA is to ensure that you have all the necessary information and support to make an informed choice about what is best for you.

# HOW WE CAN HELP...

- An assessment to identify your needs
- Tailored support plan
- Practical and emotional support
- Regular face-to-face and telephone support
- Support to access healthcare and other services
- Advocate on your behalf
- Refer/ Signpost to specialist services, including those offered by **We Are Survivors**
- Safety planning
- Information, guidance and support to report to the police, should you wish to do so.
- Assistance to attend a Sexual Assault Referral Centre (SARC) where required.
- Act as the main point of contact for updates regarding the investigation and/or court case.
- Liaison between police and Crown Prosecution Service on your behalf.
- Support to attend interviews and meetings with the police and relevant agencies.
- Arrange pre-trial visit to court.
- Support to attend court proceedings
- Apply for special measures to relieve stress and anxiety around attending court.
- Provide information and support around complaints procedures.
- Assistance to apply for Criminal Injuries Compensation.



# CONFIDENTIALITY

We Are Survivors staff abide by a confidentiality policy, which means everything you discuss is confidential, unless:

- You consent to information being shared with named organisations or individuals
- You disclose information which identifies risk to you or any child/children
- You disclose that you intend to carry out act/acts that are likely to put others at risk
- You disclose new information during a police investigation

# GET IN TOUCH

## MAIN OFFICE

Unit 9 Brewery Yard,  
Deva City Office Park,  
Trinity Way, Salford, M3 7BB

Office: 0161 236 2182

E-mail: [isva@wearesurvivors.org.uk](mailto:isva@wearesurvivors.org.uk)

24/7 Rape & Sexual Abuse Helpline: 0808 500 2222

## OUR OPENING TIMES

Mon/Wed/Fri: 9.00am - 6.00pm

Tuesday: 9.00am - 8.00pm

Thursday: 9.00am - 8.30pm



@ThisIsSurvivors

[wearesurvivors.org.uk](http://wearesurvivors.org.uk)

**WE ARE  
SURVIVORS.**